



**DEPARTMENT OF THE NAVY**  
JOINT EXPEDITIONARY BASE LITTLE CREEK-FORT STORY  
2600 TARAWA COURT, SUITE 100  
VIRGINIA BEACH, VA 23459-3297

5090  
Ser N4/ 453  
26 Aug 22

From: Commander, Joint Expeditionary Base Little Creek-Fort Story  
To: Parents and Staff

Subj: JOINT EXPEDITIONARY BASE LITTLE CREEK-FORT STORY YOUTH CENTER,  
BUILDING 457, DRINKING WATER RESULTS

Encl: (1) Test Results Overview  
(2) Sample Summary of Results  
(3) Floor Plan of JEB Fort Story Youth Center, Building 457

1. Lead exposure is a particular concern for children. Lead in drinking water typically comes from the plumbing inside buildings including lead service lines, fittings, solder, water fountains/coolers, or water outlets. Navy policy requires we test the lead content of drinking water in priority areas such as youth centers (YCs), child development group homes, and child development centers every five years. Testing at the Joint Expeditionary Base (JEB) Fort Story YC, Building 457 was conducted on 29 July 2022.
2. I am pleased to report that all drinking water intended for consumption, to include drinking water and water intended for cooking or washing, is at or below the Navy lead screening level of 15 parts per billion.
3. In all, 10 samples were taken and tested. An overview and summary of all the test results are included in Enclosures (1) and (2). A building floor plan indicating the locations the samples were taken from are in Enclosure (3). You can also see a hard copy of our water testing results at the JEB Fort Story YC, Building 457, which is open Monday through Friday 0500 to 1900.
4. For your information, I am also including the links to additional drinking water quality resources:
  - a. Environmental Protection Agency (EPA) website: <https://www.epa.gov/ground-water-and-drinking-water/basic-information-about-lead-drinking-water>
  - b. Annual water quality report for the installation: <https://cnrma.cnmc.navy.mil/Operations-and-Management/Environmental-Support/Drinking-Water-Quality-Information/>
  - c. To learn more about the installation's public water supplier, see their annual water quality report: <https://www.norfolk.gov/657/Water-Quality-Reports>
5. To answer any questions you may have on the sampling program, contact the Joint Expeditionary Base Little Creek-Fort Story Public Affairs Officer at (757) 462-8425.

Subj: JOINT EXPEDITIONARY BASE LITTLE CREEK-FORT STORY YOUTH CENTER,  
BUILDING 457, DRINKING WATER RESULTS

6. If you have any health related questions or concerns about lead exposure, I encourage you to contact your health care provider or if you are a TRICARE beneficiary, use the Hampton Roads Appointment Center to schedule an appointment with your primary care provider at 1 (866) 645-4584.

7. Rest assured that my team and I will continue to monitor and test water quality, as well as take actions where necessary at the YC to ensure our drinking water complies with Navy policy and EPA regulations. I am committed to the safety and health of all personnel and family members using our facilities.

Sincerely,

  
M. L. WITHERSPOON  
Captain, United States Navy  
Commander

Copy to:  
Commander, Navy Installations Command (N45)  
Naval Facilities (N45)  
Branch Health Clinic Boone  
Naval Medical Center Portsmouth  
Navy and Marine Corps Public Health Center (NMCPHC)

## Test Results Overview

### Overview of Testing Results for Lead in Drinking Water for JEB Fort Story YC, Building 457

The Navy is committed to maintaining safe drinking water on its installations. The City of Virginia Beach water supplied to the Navy and the Navy's water distribution system is regularly tested and in compliance with the Safe Drinking Water Act. Because lead exposure is a particular concern for children, and lead may be added to drinking water due to its presence in pipes, fittings, solder, and fixtures inside a building, the Navy policy requires that we test the lead content of drinking water in priority areas such as youth centers (YCs), child development group homes, and child development centers every five years.

Navy environmental personnel conducted lead testing at the Joint Expeditionary Base (JEB) Fort Story YC Building 457 in accordance with Navy and EPA guidelines. Samples from outlets in the YC were sent to James R. Reed & Associates, a state-certified laboratory, for analysis.

At the JEB Fort Story YC Building 457, outlets used for drinking, cooking, and washing were tested. Out of **10** samples collected, no water outlet tested above the Navy screening level of 15 parts per billion (ppb) for lead in drinking water in schools and YCs.

A copy of all test results is enclosed for your information. The test results are presented in two tables in Enclosure (1).

- Table 1 **Sample Summary of Results** summarizes the data by category of use (e.g., drinking, cooking, and washing).
- Table 2 **Summary Statistics** summarizes all the data.

**Table 1** provides a description of each sampling location using four columns; *Category*, *Outlet ID No.*, *Sampling ID*, and *Outlet Description*. The *Category* column gives information about whether the outlet is used for drinking water (water fountain), cooking (food preparation), or washing (primarily hand-washing). The *Outlet ID No.* is the inventory number for the outlets at the CDC. The *Sample ID* column is the identification used to label each sample bottle. The *Outlet Description* column contains additional information to describe the outlet sampled under each category.

The next set of columns in **Table 1** provide *Initial Sampling Results*.

EPA sampling protocol requires water to not be used for between 8 and 18 hours prior to first draw sampling. Therefore, *Initial Sampling Results were from* first draw samples collected early in the morning before the YC opened and before any water was used.

A floor plan of the JEB Fort Story YC Building 457 has also been included, as Enclosure (2), to show the locations of the outlets tested.

Sample Summary of Results  
Priority Areas Lead Testing  
JEB Fort Story Youth Center, Building 457

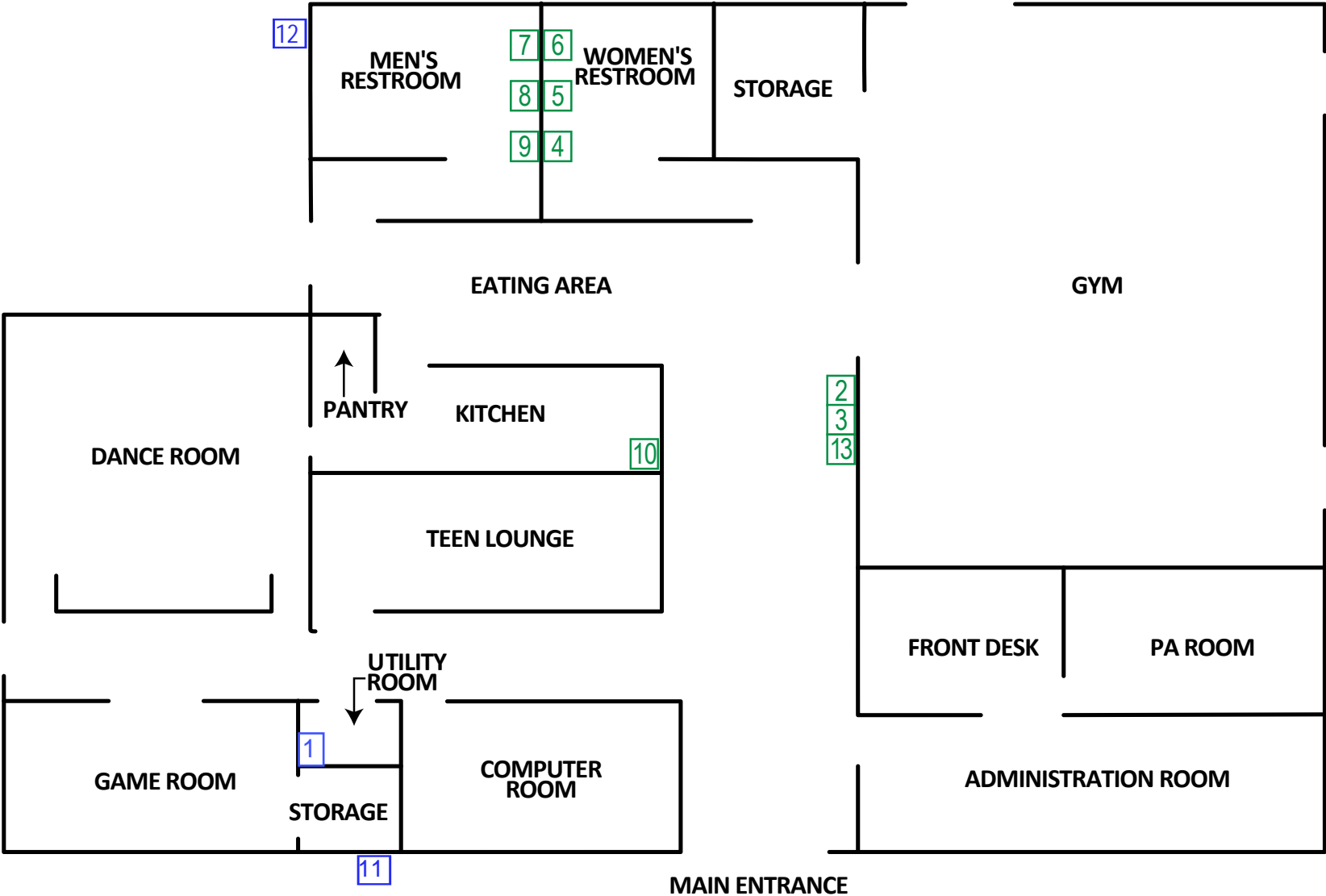
Table 1. Summary of Results

SAMPLING LOCATION DESCRIPTION					INITIAL SAMPLING RESULTS			RE-SAMPLING RESULTS			CORRECTIVE ACTIONS	POST REMEDIATION SAMPLING	
CATEGORY	SAMPLE ID NO.	SAMPLE ID	Outlet Description	Comments	Lead Screening Level of 15 ppb								
					First Draw (ppb)	Retest required?	Date Fixture Secured?	Water Fountain 15 min. Follow up Flush Sample - Collected day before First Draw Sampling (ppb)	First Draw (ppb)	Follow up Flush - Collected 30 seconds after First Draw Sampling (ppb)	Description	First Draw (ppb)	Follow up Flush - Collected 30 seconds after First Draw Sampling (ppb)
<b>SAMPLING DATE</b>					7/29/2022			mm/dd/yyyy	mm/dd/yyyy	mm/dd/yyyy		mm/dd/yyyy	
<b>RESULTS DATE</b>					8/5/2022			mm/dd/yyyy	mm/dd/yyyy	mm/dd/yyyy		mm/dd/yyyy	
DRINKING	2	FS-457-HALL-WFCA-FD	Water fountain cooler (low) in Hallway		1	No	N/A	N/A	N/A	N/A	N/A	N/A	N/A
DRINKING	3	FS-457-HALL-WFCB-FD	Water fountain cooler (high) in Hallway		non-detect	No	N/A	N/A	N/A	N/A	N/A	N/A	N/A
DRINKING	13	FS-457-HALL-WFCC-FD	Water fountain cooler (high) in Hallway		non-detect	No	N/A	N/A	N/A	N/A	N/A	N/A	N/A
COOKING	10	FS-457-K-K-FD	Kitchen sink used for food preparation and dishwashing in the kitchen	Used for filling water jugs	non-detect	No	N/A	N/A	N/A	N/A	N/A	N/A	N/A
WASHING	4	FS-457-BATHA-HHWA-FD	High handwashing faucet in Women's Restroom (Restroom A)		non-detect	No	N/A	N/A	N/A	N/A	N/A	N/A	N/A
WASHING	5	FS-457-BATHA-LHW-FD	Low handwashing faucet in Women's Restroom (Restroom A)		non-detect	No	N/A	N/A	N/A	N/A	N/A	N/A	N/A
WASHING	6	FS-457-BATHA-HHWA-FD	High handwashing faucet in Women's Restroom (Restroom A)		non-detect	No	N/A	N/A	N/A	N/A	N/A	N/A	N/A
WASHING	7	FS-457-BATHB-HHWA-FD	High handwashing faucet in Men's Restroom (Restroom B)		non-detect	No	N/A	N/A	N/A	N/A	N/A	N/A	N/A
WASHING	8	FS-457-BATHB-LHW-FD	Low handwashing faucet in Men's Restroom (Restroom B)		non-detect	No	N/A	N/A	N/A	N/A	N/A	N/A	N/A
WASHING	9	FS-457-BATHB-HHWA-FD	High handwashing faucet in Men's Restroom (Restroom B)		non-detect	No	N/A	N/A	N/A	N/A	N/A	N/A	N/A

Table 2. Summary Statistics

CATEGORY	INITIAL SAMPLING RESULTS	RE-SAMPLING RESULTS			POST REMEDIATION RESULTS
	First Draw (ppb)	Water Fountain Follow up Flush Sample - Collected day before First Draw Sampling (ppb)	First Draw (ppb)	Follow up Flush - Collected 30 seconds after First Draw Sampling (ppb)	First Draw (ppb)
<b>Total Drinking</b>	3	N/A	N/A	N/A	N/A
<b>Total Drinking &gt; 15 ppb</b>	0	N/A	N/A	N/A	N/A
<b>Total Cooking</b>	1	N/A	N/A	N/A	N/A
<b>Total Cooking &gt; 15 ppb</b>	0	N/A	N/A	N/A	N/A
<b>Total Washing</b>	6	N/A	N/A	N/A	N/A
<b>Total Washing &gt; 15 ppb</b>	0	N/A	N/A	N/A	N/A
<b>Total Samples</b>	10	N/A	N/A	N/A	N/A
<b>Total Samples &gt; 15 ppb</b>	0	N/A	N/A	N/A	N/A

# Floor Plan of JEB Fort Story Youth Center, Building 457



1 BUILDING 457 - FLOOR PLAN

NOT TO SCALE

# Outlet numbers pertaining to the floor plan.  
 Green = Below 15 ppb  
 Blue = Not Sampled: outlet not used for drinking, cooking, or washing



NORTH

No.	Type of Fixture	Location Description	Exceeded?
1	Utility sink	Utility Room	Not sampled
2	Water fountain cooler (low)	Hallway	No
3	Water fountain cooler (high)	Hallway	No
4	High handwashing faucet	Women's Restroom (Restroom A)	No
5	Low handwashing faucet	Women's Restroom (Restroom A)	No
6	High handwashing faucet	Women's Restroom (Restroom A)	No
7	High handwashing faucet	Men's Restroom (Restroom B)	No
8	Low handwashing faucet	Men's Restroom (Restroom B)	No
9	High handwashing faucet	Men's Restroom (Restroom B)	No
10	Kitchen sink used for food preparation and dishwashing	Kitchen	No
11	Hose bib	Outside on the northwest side of Building 457	Not sampled
12	Hose bib	Outside on the southeast side of Building 457	Not sampled
13	Water fountain cooler (high)	Hallway	No

# Outlet numbers pertaining to the floor plan.  
 Green = Below 15 ppb  
 Blue = Not sampled